

**VPVision offers you direct insight in your compressed air usage. On one central touch screen you get a complete overview of the compressed air usage of the departments in your factory. From now on your compressed air consumption is no longer a mystery!**

VPVision shows in real time your compressed air usage of multiple flow meters. VPVision visualizes the compressed air division over departments in percentages. In one convenient overview you can see which departments are your main users.

All measurement data is logged according to a smart data logging system. You can get daily, weekly and monthly overviews of your measurement data. Via the USB port it is easy to obtain the data for further processing.



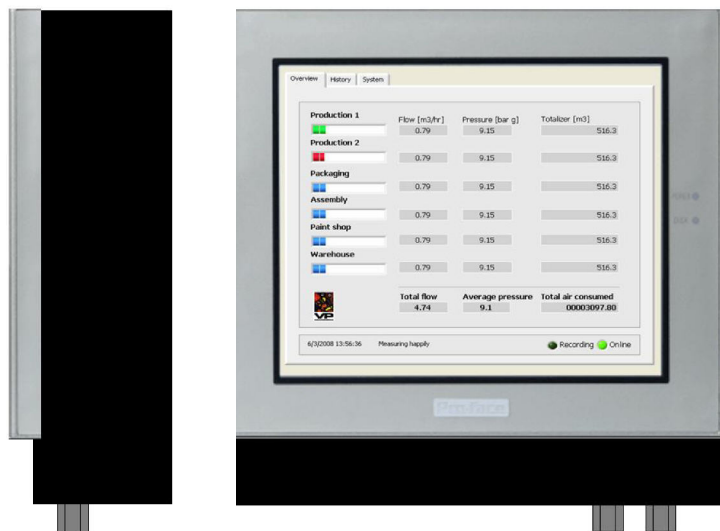
## Benefits:

- Direct insight
- Plug and play
- Quick and easy reporting
- Future proof: upgradeable

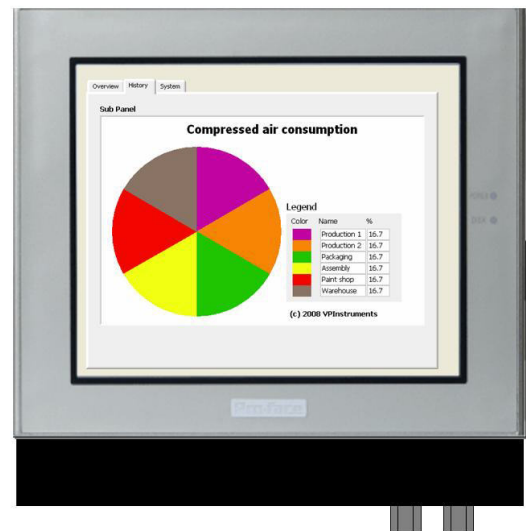
## Applications:

- Leakage / Maintenance management
- Energy management
- Cost allocation

VPVision main screen

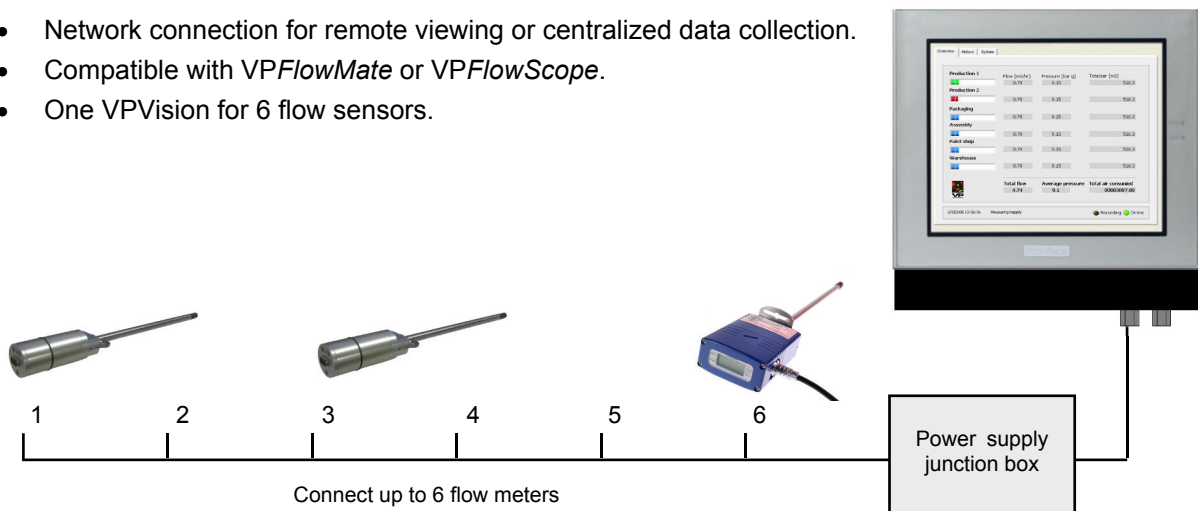


Division over departments



## Features:

- Touch screen with overview of your compressed air usage.
- Smart data logging with automatic filing system.
- External USB connection for memory stick: direct downloading of the measurement data.
- Network connection for remote viewing or centralized data collection.
- Compatible with *VPFlowMate* or *VPFlowScope*.
- One VPVision for 6 flow sensors.



## Specifications:

Protection housing	IP65
Housing material	Industrial touch screen
Output	External USB, ethernet
Communication	RS232, RS485 or ethernet*
Parameters	Mass flow, totalizer and pressure*
Power supply	90..230 VAC, mains included
Gases	Compressed air, Nitrogen, Inert gases

\* Depending on type of flow sensor



**VP INSTRUMENTS**

Van Putten Instruments B.V.  
 Buitenwatersloot 335, 2614GS, Delft  
 The Netherlands  
[www.vpinstruments.com](http://www.vpinstruments.com)  
[Info@vpinstruments.com](mailto:Info@vpinstruments.com)  
 T: +31 (0)15 213 1580  
 F: +31 (0)15 213 0669

